

MANUAL RELEASE INSTRUCTIONS ** Underground*

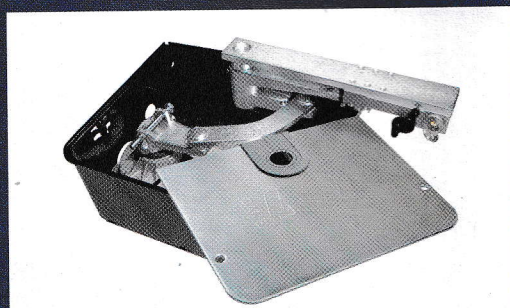


Underground Gate Operator

FROG

Key release systems

The Frog Underground system is supplied with one of three release mechanisms; a triangular key system, a DIN key system or a lever system. Release instructions for the two key systems are below and for the lever system on the following page.



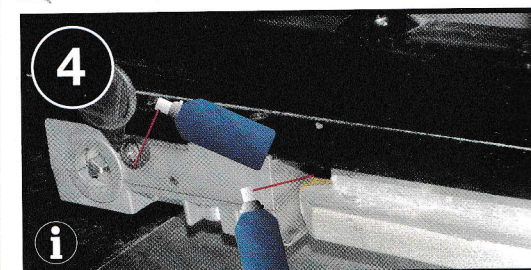
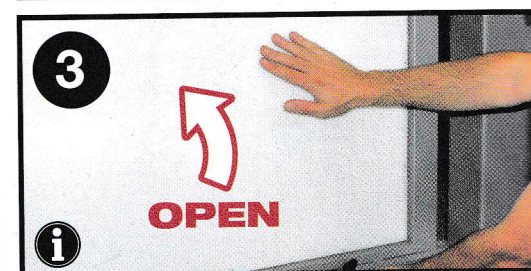
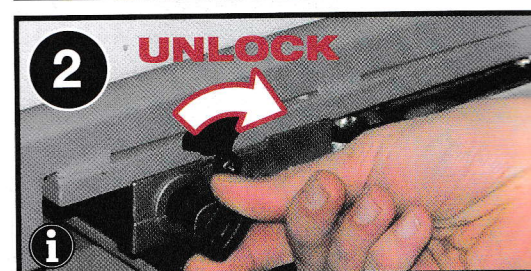
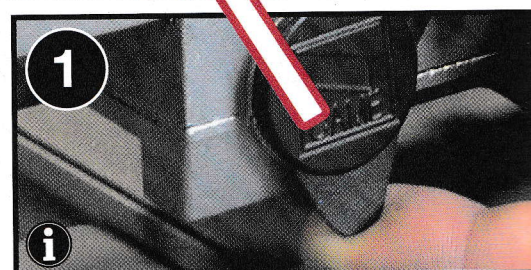
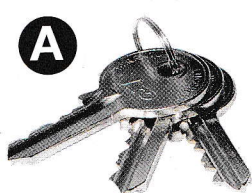
TO MANUALLY RELEASE THE GATES:



ALWAYS isolate the power supply as instructed by your installer (even during a power cut).



Release any additional locking device fitted to the gate (eg. electric lock etc).



INSTRUCTIONS



- 1 Lift tab.
- 2 Insert DIN Key **A** or 3-Sided Key **B** into lock and turn 90° to release.
- 3 With the key in place (fully turned 90°) the gate should be manually released. Now open gate the using your other hand carefully at the same speed as the automatic operator.

To re-engage the gate, return it to the closed position and remove the key. Please note, it may be necessary to operate the motor once power is restored to fully engage the system. Please take due care when operating the system in this manner.

FROG

Basic Maintenance

Hints & Tips



- Lift manual release tabs & spray the locks on both sides with suitable penetrating lubricant.
- Spray into the lock at the connection point (brass part) with suitable penetrating lubricant (See pic **4**).
- Lubricate gate hinges.
- Manually release the gates at least once per month.